



GH™ BIG RIG™ SPRAYERS

Large Gas Hydraulic Sprayers



PROVEN QUALITY. LEADING TECHNOLOGY.



THERE IS NOTHING LIKE A GRACO BIG RIG SPRAYER

Graco Big Rig airless sprayers provide the highest pressure and flow for the heaviest materials. These powerful sprayers are recognized as solid, reliable investments that will keep you spraying and save you money to move your business forward.

TRUST YOUR BUSINESS AND REPUTATION TO GRACO

Graco is committed to providing the highest quality Big Rig airless sprayers available, backed by the industry's best warranty.

AMERICAN BUILT QUALITY SINCE 1926

100% factory-tested and field-proven Graco professional gas airless sprayers are designed, manufactured, and assembled in the USA.

INDUSTRY-LEADING WARRANTY

Behind every Graco sprayer is the industry's strongest warranty. You may never use Graco's warranty — but if you do, we will be there.

GRACO-ONLY SOLUTIONS THAT KEEP YOU SPRAYING



PATENT PENDING

THE LONGEST LASTING PUMPS EVER BUILT

- Longest life in the industry with Vortex™ rotating piston rod
- 6X more gallons sprayed between repacks
- Extends pump rod life by 3X — delivering the industry's lowest cost of ownership



LEGENDARY PERFORMANCE

Heavy-Duty Graco Hydraulic System

- Faster, more responsive changeover
- O-ring sealed to eliminate leaks
- High-precision pressure control
- No hydraulic reset button needed
- Durable hydraulic lines for long life



REDUCED DOWNTIME

High-Capacity Cooling System

- Innovative design allows the pump to run cooler and more efficiently
- Easier and more thorough fluid changes
- Reservoir cooling fins deflect more heat
- No special hydraulic fluid needed



RELIABLE, POWERFUL AND EASY-TO-START

Honda® Engines

- Oil Alert shuts down engine to prevent damage if oil level drops too low
- Contractor preferred



MAXIMIZE PRODUCTION

QuikChange™ Pump Lowers

- Easily customize your Big Rig for each coating
- No need to purchase additional rigs
- Exclusively on Graco Xtreme™ pumps



WORK SMARTER AND FASTER

Proven Big Rig Accessories

- Heavy-Duty 18" JetRoller™ System: one step spray and back roll
- 25 gallon Material Hopper: spend more time spraying and less time refilling
- Many more time saving accessories



BIG RIG MATERIAL AND APPLICATION GUIDE

When you need maximum performance, versatility, durability, and time-saving accessories, look no further than Graco's line of Big Rig Large Gas Hydraulic Sprayers. Whether you are applying roof coatings, waterproofing, fireproofing, protective, or architectural coating, count on Graco Big Rig Sprayers to get the job done—FAST!

APPLICATIONS



| | | PRESSURE (PSI) | FLOW (GPM) | QUICKCHANGE PUMP | COMPLEMENTARY UNIT FOR SMALL JOBS | COOL ROOF | SILICONE |
|-----------|----------------------|----------------|------------|------------------|-----------------------------------|-----------|----------|
| EQUIPMENT | GH 933 Hi Flo | 7250 | 2.5 | + | DutyMax GH 675DI | ● | ● |
| | GH 933 | 7250 | 2.5 | + | DutyMax GH 675DI | ● | |
| | DutyMax™ GH 675DI | 6750 | 1.5 | + | | ● | ● |
| | GH 5040 | 5000 | 3.5 | + | DutyMax GH 675DI | ● | |
| | GH 833 | 4000 | 4.0 | - | GMAX 7900 Roof Rig | ● | |
| | GH 733 | 4000 | 4.0 | + | GMAX 7900 Roof Rig | ● | |
| | GMAX® 7900 RR | 3300 | 2.2 | - | | ● | |
| | GH 2570 | 2500 | 7.0 | + | GMAX 7900 Roof Rig | ● | |
| | GH 1017 | 1000 | 16.5 | + | | | |

KEY APPLICATION ACCESSORIES

Direct Immersion Kit
287843 – GH 733, GH 833,
GH 933, GH 5040
16U764 – GH 2570

Hopper Kits
25 Gallon Plastic – 25D078 GH
933, GH 5040, GH 733, DutyMax
GH 675DI
12 Gallon SST – 16U505
GH 933, GH 5040, GH 733

Big 150 and 250 Kits
See page 11 for PNs and details

Mastic Gun w/36" Extension 5000 psi
224472

Heavy-Duty 18" JetRoller
25D229

5:1 Monark® Feed Pump Kit
24A423 – GH 933

Hopper Kits
25 Gallon Plastic –
25D078 GH933, GH 5040,
GH 733, DutyMax GH 675DI

Big 150 and 250 Kits
See page 11 for PNs and details

Heavy-Duty 18" JetRoller
25D229



APPLICATIONS



| ELASTOMERIC | MONOFORM | EMULSION | INTUMESCENT | PAINTS AND PRIMERS | PROTECTIVE | PROTECTIVE HIGH SOLIDS |
|-------------|----------|----------|-------------|--------------------|------------|------------------------|
| ● | | ● | ● | | | ● |
| ● | | ● | ● | ● | ● | ● |
| ● | | ● | ● | ● | ● | ● |
| ● | | ● | ● | ● | ● | |
| ● | | ● | ● | ● | ● | |
| ● | | ● | ● | ● | ● | |
| ● | | ● | ● | ● | ● | |
| | ● | ● | | ● | ● | |
| | ● | ● | | | | |

5:1 Monark Feed Pump Kit
24A423 – GH 933

Direct Immersion Kit
287843 – GH 733, GH 833,
GH 833, GH 5040
16U764 – GH 2570

Hopper Kits
25 Gallon Plastic –
25D078 GH933, GH 5040,
GH 733, DutyMax GH 675DI
12 Gallon SST – 16U505
GH 933, GH 5040, GH 733

Big 150 and 250 Kits
See page 11 for PNs and details

Heavy-Duty 18" JetRoller
25D229

Direct Immersion Kit
287843 – GH 733, GH 833,
GH 833, GH 5040
16U764 – GH 2570

Hopper Kits
25 Gallon Plastic –
25D078 GH933, GH 5040, GH 733,
DutyMax GH 675DI
12 Gallon SST – 16U505
GH 933, GH 5040, GH 733

Big 150 and 250 Kits
See page 11 for PNs and details

Heavy-Duty 18" JetRoller
25D229

5:1 Monark Feed Pump Kit
24A423 – GH 933

Hopper Kits
25 Gallon Plastic –
25D078 GH933, GH 5040,
GH 733, DutyMax GH 675DI
Big 150 and 250 Kits
See page 11 for PNs and details

Direct Immersion Kit
287843 – GH 733, GH 833,
GH 833, GH 5040
16U764 – GH 2570

Hopper Kits
25 Gallon Plastic –
25D078 GH933, GH 5040, GH 733,
DutyMax GH 675DI
12 Gallon SST – 16U505
GH 933, GH 5040, GH 733

Hopper Kit
12 Gallon SST – 16U505
GH 933, GH 5040, GH 733

Hopper Kit
12 Gallon SST – 16U505
GH 933, GH 5040, GH 733

GMAX II 7900 IRONMAN

ROOF RIG SPRAYER

The GMAX II 7900 IronMan Roof Rig is the industry-standard for professional contractors who spray a full range of coatings on residential, commercial, and industrial jobs. Powered by a Honda engine, this portable rig will go anywhere the job demands.



THE LONGEST LIFE EVER

New Endurance Vortex MaxLife Extreme™ Piston Pump

Breakthrough Vortex Rotating Rod Technology Keeps You Spraying:

- Oversized passages for high-velocity flow to rotate rod for even wear
- 6X more gallons sprayed between repacks. Extreme rod extends pump rod life by 3X
- Graco exclusive abrasion-resistance composite delivers the most durable wear surface
- Repack pump in minutes with new QuikPak™ cartridge repair system



ELIMINATE COSTLY DOWNTIME

ProConnect™ Pump Replacement System

- Exchange pump in minutes — pinless design needs no tools



NEVER HAVE A FLAT AGAIN

Flat Proof Tires

- No tire puncturing from nails, screws, or any sharp debris



DURABLE FILTRATION

Crushproof Inlet Strainer

- Stands up to harsh impacts to maintain filtering and flow

CONSISTENT SPRAY FAN AND PRESSURE CONTROL

SmartControl™ 3.0

- Lowest dead band at any pressure
- Ideal for low overspray applications

PUMP DAMAGE PROTECTION

WatchDog™ Pump Protection System

- Automatically shuts down the pump when paint runs out or if the hose is damaged

THE LONGEST LASTING DRIVE

Advantage Drive™

- Hardened steel gears provide extremely quiet operation
- Contractor preferred

EASY MAINTENANCE AND LESS CLOGGING

Easy Out™ Pump Filter

- Exclusive inside-out filtering process ensures a quality finish and less mess



ROOF RIG SPRAYER

GMAX II 7900 IronMan Roof Rig

PART

17E835

GH 833

BIG RIG SPRAYER

The GH 833 is the preferred choice for high production professional contractors who spray the wide range of materials. This jobsite-proven workhorse is the answer when you demand ruggedness, performance, and value.



HONDA ENGINE WITH ELECTRIC START*

(*ES Models only)

- 390 cc (13 HP) engine with integrated fuel tank to deliver maximum performance
- Contractor preferred engine with Oil Alert
- Backup pull start
- High-capacity, 12 V 18 amp Charging System*



HEAVY-DUTY GRACO HYDRAULIC SYSTEM

- Faster, more responsive changeover
- O-ring sealed to eliminate leaks
- High-precision pressure control
- No hydraulic reset button needed
- Durable hydraulic lines for long life

FLOW-THROUGH FILTER SYSTEM

- Inside/out design eliminates clogged filters
- Eliminates tip clogs

HEAVY-DUTY FRAME

- Easy-roll tubed pneumatic tires
- Enamel painted steel tubing — corrosion protection
- Multifunction design converts to skid mount in seconds

EXCLUSIVE MAXLIFE® ENDURANCE™ PUMP

- Proven design and performance
- Only 16 cycles per gallon
- Exclusive MaxLife rod and sleeve delivers unmatched durability and life
- Exclusive QuikChange Pump System and QuikAccess™ Intake Valve eliminates downtime

HEAVY-DUTY COOLING SYSTEM

- Large 4 gallon hydraulic reservoir
- Return line hydraulic filter extends life
- No special hydraulic fluid needed
- Proven cooler and blower system
- Easy-to-use drain plug



Direct Immersion Kit allows ultimate flexibility with tough-to-spray materials. (Part #287843)

| ROOF RIG SPRAYERS | PART # |
|----------------------------------|--------|
| GH 833 Bare | 249318 |
| GH 833 Complete | 249617 |
| GH 833ES Bare Electric Start | 16U287 |
| GH 833ES Complete Electric Start | 16U288 |
| GH 833 OEM | 249767 |

DUTYMAX GH 675DI

MAXIMUM POWER AND PERFORMANCE

The DutyMax GH 675DI is the preferred choice for high production professional contractors who handle hard-to-atomize materials such as silicone and other waterproofing and protective coating materials. This compact sprayer includes the ultimate portability anywhere the job demands.

SMALL SIZE, ULTIMATE PORTABILITY

- Maximum pressure of 6750 psi and flow rates up to 1.5 gpm to tackle the toughest coatings
- Cleanup is simple and economical using less solvent than larger systems
- Significantly faster than manual rolling or squeegee applications
- Spraying delivers more consistent mil build over the entire surface
- Converts to 3300 psi/3 gpm pump with optional kit: spray both silicone and acrylics — like having 2 sprayers in 1
- Removable engine for ultimate versatility when moving



THE PERFECT SMALL JOB AND CUT-IN SOLUTION!

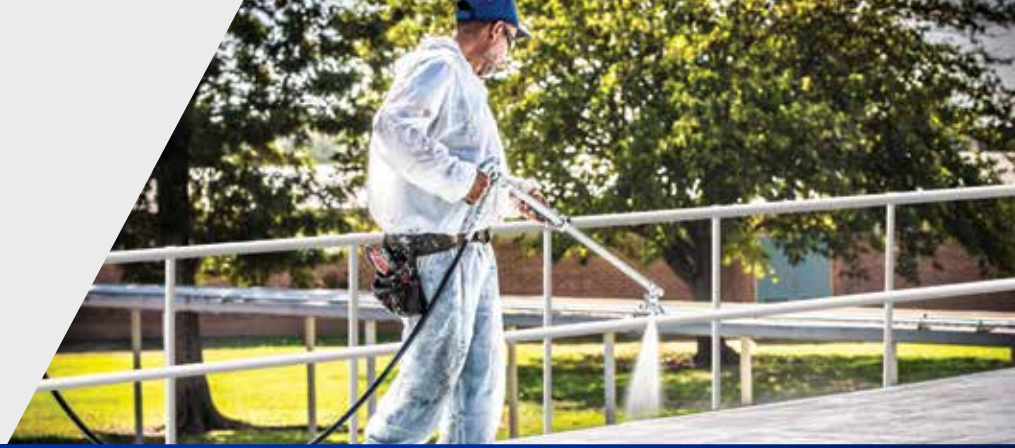


The ideal complement to your larger rigs on the big jobs for cut-in and detail work.



Ready to spray: complete with XTR-7 HF Gun w/ Swivel, XHD 523, 527, 531 Tip and Guard, 3/8 in x 10 ft Xtreme Duty Whip Hose, in addition to the items listed below.

| ROOF RIG SPRAYERS | ALSO INCLUDES | PART # |
|------------------------------------|---|--------|
| DutyMax GH 675DI Complete | 1/2 in x 50 ft Xtreme Duty Hose | 25D223 |
| DutyMax GH 675DI Big 150 | (3) 1/2 in x 50 ft Xtreme Duty Hose, 18 in Tip Extension, 180 degree Tip Swivel, all fittings | 25D225 |
| DutyMax GH 675DI Big 150 w/ Hopper | (3) 1/2 in x 50 ft Xtreme Duty Hose, 18 in Tip Extension, 180 degree Tip Swivel, all fittings, 25 Gallon Material Hopper with Couplings | 25D226 |



WORK SMARTER AND FASTER WITH GREAT ACCESSORIES



WINDY CONDITIONS? NO PROBLEM WITH THE NEW HEAVY DUTY 18" JETROLLER*

Introducing the all new Heavy Duty 18" JetRoller. Designed specifically for the most severe jobsite conditions, this innovative spray roller offers low overspray and a wide coverage area. Perfect for horizontal surfaces, this accessory gives you the power to spray, even in moderate crosswinds, with virtually no overspray. Now you can get the benefit of spraying and backrolling all in one step, with one person.



REFILL LESS WITH 25 GALLON HOPPER*

Eliminate wasted time refilling with the new 25 gallon hopper. This time-saving hopper features a lid, wheels, heavy-duty frame, and flexible connection to the sprayer to allow easy maneuvering around jobsite while still connected. Included plugs allow disassembly with less mess.

Spend more time spraying and less time managing refills with the 25 Gallon Hopper.



**See page 12 for more information.*

| ACCESSORIES | PART # |
|----------------------------|--------|
| Heavy-Duty 18 in JetRoller | 25D229 |
| 25 Gallon Hopper | 25D078 |

BIG RIG SPRAYERS

GH 733/GH 933/GH 1017/GH 2570/GH 5040

For over 30 years, contractors have turned to the GH line of gas hydraulic sprayers when they needed maximum performance and unmatched versatility. Whether you require high pressure for long hose runs and hard-to-atomize materials, or high flow rates for heavier coverage, turn to the GH Big Rig sprayers to get the job done!



HONDA ENGINE WITH ELECTRIC START*

(*ES models only)

- 390 cc (13 HP) engine with integrated fuel tank to deliver maximum performance
- Contractor preferred engine with Oil Alert
- Backup pull start
- High-capacity, 12 V 18 amp charging system*



RUGGED, HEAVY-DUTY STEEL FRAME

- Welded, heavy-gauge steel construction
- Integrated, fully balanced lift points
- Easy-roll tubed pneumatic tires
- Enamel painted steel tubing—corrosion protection
- Multifunction design converts to skid mount in seconds—easily converts to secure skid mount by moving handle to lower frame holes



EXCLUSIVE XTREME PUMP

- QuikChange pump section
- Time-tested durability and performance
- Long-life XtremeSeal™ and leather packings
- Heavy-duty piston rod for long life
- QuikAccess intake valve removes easily for fast repairs

HEAVY-DUTY GRACO HYDRAULIC SYSTEM

- Faster, more responsive changeover
- O-ring sealed to eliminate leaks
- High-precision pressure control
- No hydraulic reset button needed
- Durable hydraulic lines for long life

HEAVY-DUTY COOLING SYSTEM

- Large 4 gallon hydraulic reservoir
- Return line hydraulic filter extends life
- No special hydraulic fluid needed
- Proven cooler and blower system
- Easy-to-use drain plug

ADDITIONAL FEATURES

- Lockable pressure control knob
- Grounding wire for safety with solvent materials
- Large diameter siphon hose



| RIG SPRAYERS | PART # |
|-------------------------------|--------|
| GH 733ES Bare Electric Start | 16U279 |
| GH 1017ES Bare Electric Start | 16U277 |
| GH 2570ES Bare Electric Start | 16U278 |
| GH 5040ES Bare Electric Start | 16U280 |

| | | GMAX II 7900 RR | DUTYMAX GH 6750 ^{DL} * | GH 733 | GH 833 | GH 933 | GH 1017 | GH 2570 | GH 5040 |
|--------------|--|--------------------|------------------------------------|--------|--------|--------|---------|---------|---------|
| APPLICATIONS | Latex Paints | ● | ● | ● | ● | ● | | ● | ● |
| | Primers | ● | ● | ● | ● | ● | | ● | ● |
| | Block Fillers | ● | ● | ● | ● | ● | | ● | ● |
| | Enamel | ● | ● | ● | ● | ● | | ● | ● |
| | Elastomerics | ● | ● | ● | ● | ● | | ● | ● |
| | Acrylic: Water/Solvent | ● | ● | ● | ● | ● | ● | ● | ● |
| | Epoxy: Finishes/Mastics | ● | ● | ● | ● | ● | ● | ● | ● |
| | Polyester | ● | ● | ● | ● | ● | ● | ● | ● |
| | Coal Tar | ● | ● | ● | ● | ● | ● | ● | ● |
| | Polyurethane | ● | ● | ● | ● | ● | ● | ● | ● |
| | Asphalt Emulsion: Fibered/Non-fibered | | ● | ● | ● | ● | ● | ● | ● |
| | Mastics - Adhesive Type | | ● | ● | ● | ● | | | ● |
| | Waterproofing/Above and Below Grade | | ● | ● | ● | ● | | | ● |
| | Contract Cement | | ● | ● | ● | ● | | | ● |
| | Asphalt Cut-back: Fibered/Non-fibered | | | | | | ● | ● | ● |
| | Texture: Smooth and Fine | | ● | ● | ● | ● | | | ● |
| | Burmastics | | ● | | ● | ● | | | ● |
| | Monoform | | | | | | ● | ● | |
| | Aluminum Emulsion: Fibered/Non-fibered | ● | ● | ● | ● | ● | ● | ● | ● |
| | Elastomeric Acrylic | ● | ● | ● | ● | ● | | | ● |
| | Emulsion Primer | ● | ● | ● | ● | ● | ● | ● | ● |
| | Silicone | | ● | | | ● | | | ● |
| | Intumescent | | ● | | | ● | | | ● |

Note: Materials and temperatures may dictate the hose length you can use. Fibered materials not recommended.



GH933

The choice for Protective and Intumescent Coatings

Complete Sprayer Includes:

- XTR 704 Gun
- XHD™ 519 SwitchTip™ and Guard
- 3/8 in x 50 ft (9.5 mm x 15 m) Xtreme-Duty Airless Hose
- 1/4 in x 6 ft (6.4 mm x 1.8 m) Xtreme-Duty Whip Hose



GH933ES HI-FLO

Optimized for Silicone and other Heavy Bodied Materials

Equipped with Graco's proven Xtreme pump lower with durable Tuff-Stack™ packings, this pump features oversized outlets and a filterless design for maximum flow and performance.

Complete Sprayer Includes:

- XHF Gun
- XHD 429 SwitchTip™ and Guard
- 3/8 in x 50 ft (9.5 mm x 15 m) Xtreme-Duty Airless Hose
- 1/4 in x 6 ft (6.4 mm x 1.8 m) Xtreme-Duty Whip Hose

| | |
|--|--|
| | Architectural |
| | Protective |
| | Roofing, Waterproofing, Fireproofing |

| BIG RIG SPRAYERS | PART # |
|----------------------------------|--------|
| GH 933 Bare | 16U281 |
| GH 933 Complete | 16U282 |
| GH 933 Bare Electric Start | 16U285 |
| GH 933ES Complete Electric Start | 16U286 |
| GH 933ES Hi Flo Bare | 17B484 |
| GH 933ES Hi Flo Complete | 17B485 |

ROOF RIGS

READY-TO-SPRAY BIG 150 AND BIG 250 SYSTEMS

Decide which system fits your application needs with these 11 ready-to-spray systems from Graco. Configured with 150 or 250 feet of pressure-rated hose, gun, tip extensions, and all the fittings you will need, these systems offer ultimate convenience and value. Whether you require high-pressure, maximum flow, electric start, or even the ability to swap pumps with available QuikChange lowers, we have a system for you!



READY-TO-SPRAY SYSTEMS

| PART # | DESCRIPTION | INCLUDES |
|--------|---|--|
| 25D225 | DutyMax GH 675DI Big 150 System | DutyMax GH 675DI, 150 ft of Xtreme-Duty 1/2 in Hose, 10 ft x 3/8 in Xtreme-Duty Whip Hose, XTR-7 HF Gun, 18 in Tip Extension, 180 degree Tip Swivel, XHD 527 & 531 Tips, and all fittings |
| 25D226 | DutyMax GH 675DI Big 150 with 25 Gallon Material Hopper | DutyMax GH 675DI, 25 Gallon Material Hopper and Couplings, 150 ft of Xtreme-Duty 1/2 in Hose, 10 ft x 3/8 in Xtreme-Duty Whip Hose, XTR-7 HF Gun, 18 in Tip Extension, 180 degree Tip Swivel, XHD 527 & 531 Tips, and all fittings |
| 16U776 | GH 2570es Big 250 System | GH 2570es with Electric Start, 250 ft of 1/2 in Hose, 10 ft x 3/8 in Whip Hose, Gun Swivel, Heavy-Duty Gun, 30 in Tip Extension, 180 degree Tip Swivel, RAC X™ 519, 531 Tips, and all fittings |
| 16U778 | GH 733es Big 250 System | GH 733es with Electric Start, 250 ft of 1/2 in Hose, 10 ft x 3/8 in Whip Hose, Gun Swivel, Heavy-Duty Gun, 30 in Tip Extension, 180 degree Tip Swivel, RAC X 519, 531 Tips, and all fittings |
| 16U780 | GH 833 Big 250 System | GH 833, 250 ft of 1/2 in Hose, 10 ft x 3/8 in Whip Hose, Gun Swivel, Heavy-Duty Gun, 30 in Tip Extension, 180 degree Tip Swivel, RAC X 519, 531 Tips, and all fittings |
| 16U781 | GH 833es Big 250 System | GH 833es with Electric Start, 250 ft of 1/2 in Hose, 10 ft x 3/8 in Whip Hose, Gun Swivel, Heavy-Duty Gun, 30 in Tip Extension, 180 degree Tip Swivel, RAC X 519, 531 Tips, and all fittings |
| 16U782 | GH 5040es Big 250 System | GH 5040es with Electric Start, 250 ft of 1/2 in Hose, 10 ft x 3/8 in Whip Hose, Gun Swivel, Flex Plus™ Gun, 18 in Tip Extension, 180 degree Tip Swivel, RAC X 517, 531 Tips, and all fittings |
| 16U783 | GH 933 Big 250 System | GH 933, 200 ft of 3/4 in Hose, 50 ft of 1/2 in Hose, 10 ft x 3/8 in Whip Hose, XTR-7 Gun, 18 in Tip Extension, 180 degree Tip Swivel, XHD 519, 531 Tips, and all fittings |
| 16U784 | GH 933es Big 250 System | GH 933es with Electric Start, 200 ft of 3/4 in Hose, 50 ft of 1/2 in Hose, 10 ft x 3/8 in Whip Hose, XTR-7 Gun, 18 in Tip Extension, 180 degree Tip Swivel, XHD 519, 531 Tips, and all fittings |
| 17B488 | GH 933es Hi Flo Big 250 System | GH 933es with Electric Start, 50 ft of 3/4 in Xtreme-Duty Hose, 200 ft of 1/2 in Xtreme-Duty Hose, 10 ft x 3/8 in Xtreme-Duty Whip Hose, XHF Gun, 18 in Tip Extension, 180 degree Tip Swivel, XHD 429, 531 Tips, and all fittings |
| 25M283 | GH 933es Hi Flo Big 250 System with 5:1 Monark® System | GH933es with Electric Start, 5:1 Monark Feed Pump, 200 ft of 3/4 in Xtreme-Duty Hose, 50 ft of 1/2 in Xtreme-Duty Hose, 10 ft x 3/8 in Xtreme-Duty Whip Hose, XHF Gun, 18 in Tip Extension, 180 degree Tip Swivel, XHD 429, 531 Tips, and all fittings |



QUIKCHANGE PUMP LOWERS

Exclusive QuikChange Pump Lower maximize production. Easily customize your Big Rig for each coating, without purchasing additional rigs! Each QuikChange Pump Lower Kit is sold separately. Big Rig Pump Lower Kits include Pump Lower, Tie Rods, and Rod Connector. Fits GH 733, GH 933, GH 1017, GH 2570, GH 5040 units only.

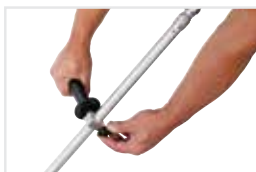
| PART # | DESCRIPTION |
|--------|------------------------------|
| 16U753 | GH 733 Pump Lower Kit |
| 16U755 | GH 933 Pump Lower Kit |
| 17B489 | GH 933 Hi Flo Pump Lower Kit |
| 16U751 | GH 1017 Pump Lower Kit |
| 16U752 | GH 2570 Pump Lower Kit |
| 16U754 | GH 5040 Pump Lower Kit |



HEAVY-DUTY 18" JETROLLER



Remove roller and it becomes a 42" spray wand!



Fully adjustable handle for ultimate comfort

One-Step Spray and Back Roll With Less Overspray Than Conventional Airless Spray!

- Combines the speed of spray with the simplicity of rolling
- Fits 9-18" standard roller covers
- Pressure rated to 7250 psi
- Perfect for windy areas

Heavy-Duty Construction

- All-aluminum construction withstands jobsite abuse
- Toolless components adjust for maximum comfort

| PART # | DESCRIPTION |
|--------|----------------------------|
| 25D229 | Heavy-Duty 18 in JetRoller |

25 GALLON MATERIAL HOPPER



Fits GH 733, GH 5040, GH 933, and GH 675DI



Boost Productivity by Minimizing Refills

- Features no-tools connections
- Large, 25 gallon capacity
- Lid protects material and keeps debris out
- Long-length flexible coupling tube allows easy maneuvering without disconnecting

Heavy-Duty Construction

- Welded steel frame withstands jobsite abuse
- Durable polyethylene hopper allows easy cleanup and accepts standard 55 gallon garbage bag for an inexpensive liner

| PART # | DESCRIPTION |
|--------|---------------------------|
| 25D078 | 25 Gallon Material Hopper |



HEAVY-DUTY, XHF, AND MASTIC GUNS

| PART # | DESCRIPTION |
|--------|---|
| 241705 | Heavy-Duty Gun with RAC X 531 Tip and Guard, 4000 psi (276 bar) |
| 224472 | Mastic Gun 36 in (.9 m) Extension, 5000 psi (345 bar) |
| 237260 | Repair Kit – Heavy-Duty Gun |
| 262854 | XHF Gun, includes XHD 429 Tip |



XTR GUNS

XTR-5™ Airless Spray Gun, 5000 psi (345 bar, 34.5 MPa)

| PART # | DESCRIPTION |
|--------|--|
| XTR500 | 1 In Round Handle, 4-Finger Trigger, no Tip |
| XTR501 | 1 In Round Handle, 4-Finger Trigger, 519 Flat Tip |
| XTR502 | Oval-insulated Handle, 4-Finger Trigger, 519 XHD RAC |
| XTR503 | Oval-insulated Handle, 2-Finger Trigger, 519 XHD RAC |
| XTR504 | 1 In Round Handle, 4-Finger Trigger, 519 XHD RAC |
| XTR505 | 1 In Round Handle, 2-Finger Trigger, 519 XHD RAC |

XTR-7 Airless Spray Gun, 7250 psi (500 bar, 50 MPa)

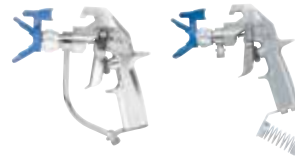
| PART # | DESCRIPTION |
|--------|--|
| XTR700 | Round Handle, 4-Finger Trigger, no Tip |
| XTR701 | Round Handle, 4-Finger Trigger, 519 Flat Tip |
| XTR702 | Oval-insulated Handle, 4-Finger Trigger, 519 XHD RAC Tip |
| XTR703 | Oval-insulated Handle, 2-Finger Trigger, 519 XHD RAC Tip |
| XTR704 | Round Handle, 4-Finger Trigger, 519 XHD RAC Tip |
| XTR705 | Round Handle, 2-Finger Trigger, 519 XHD RAC Tip |



EXTENSIONS

Includes RAC X HandTite™ Guard Standard with 7/8 in (22 mm) Gun Nut and OneSeal™ Maximum Working Pressure: 4050 psi (280 bar, 28.0 MPa)

| PART # | DESCRIPTION |
|--------|--|
| 287019 | 10 inch (25 cm) |
| 287020 | 15 inch (38 cm) |
| 287021 | 20 inch (50 cm) |
| 287022 | 30 inch (75 cm) |
| 246294 | 10 in (254 mm) Gun Extension, 7250 psi (500 bar, 50 MPa) |
| 246295 | 15 in (380 mm) Gun Extension, 7250 psi (500 bar, 50 MPa) |
| 246296 | 18 in (457 mm) Gun Extension, 7250 psi (500 bar, 50 MPa) |
| 17U148 | 42 in (107 cm) Gun Extension with Handle, 7250 psi (500 bar) |



SILVER PLUS AND FLEX PLUS GUNS

Maximum Working Pressure: 5000 psi (345 bar, 34.5 MPa)

| PART # | DESCRIPTION |
|--------|--|
| 246240 | Silver Plus Gun (2-finger) with RAC X 517 Tip and Guard |
| 243283 | Silver Plus Gun (2-finger) with RAC® 5 517 Tip and Guard |
| 235460 | Silver Plus Gun (2-finger) with Flat Tip and Guard |
| 235461 | Silver Plus Gun (4-finger) with Flat Tip and Guard |
| 235462 | Silver Plus Gun Fine Finish (2-finger) with Flat Tip and Guard |
| 246468 | Flex Plus Gun (2-finger) with RAC X 517 Tip and Guard |
| 235474 | Repair Kit (Silver Plus, Flex Plus) |

XTR-7™ HF High Flow Airless Spray Gun, 7250 psi (500 bar)

| PART # | DESCRIPTION |
|--------|--|
| 17V677 | Filterless, Oval-insulated Handle, 4-Finger Trigger, XHD 523, and 531 Tips |

**Xtreme-Duty High Pressure Gun Accessories,
(Fit both XTR-5 and XTR-7 Spray Guns)**

| PART # | DESCRIPTION |
|--------|--|
| 246294 | 10 in (254 mm) Gun Extension, 7250 psi (500 bar, 50 MPa) |
| 246295 | 15 in (380 mm) Gun Extension, 7250 psi (500 bar, 50 MPa) |
| 246296 | 18 in (457 mm) Gun Extension, 7250 psi (500 bar, 50 MPa) |
| 246297 | 180° Spray Nozzle, 7/8-14 UNC-2B, 7250 psi (500 bar, 50 MPa) |
| 248837 | Gun Repair Kit (includes Gasket, Needle, and Seat) |
| 287449 | 4-Finger Round Trigger Kit |
| 287450 | 2-Finger Trigger Kit |
| 287451 | 4-Finger Oval Insulation Trigger Kit |
| 287032 | Filter, 60 mesh |
| 287033 | Filter, 100 mesh |
| 287034 | Filter, 60 and 100 mesh combination |
| 247634 | Seal Kit, GHD Conversion (5-pack) |



GUN SWIVEL

| PART # | DESCRIPTION |
|--------|------------------------------|
| 189018 | Gun Swivel rated to 7500 psi |



SPRAY NOZZLE

| PART # | DESCRIPTION |
|--------|--|
| 246297 | 180° Spray Nozzle, 7/8-14 UNC-2B, 7250 psi (500 bar, 50 MPa) |



RAC X TIPS AND GUARDS

| PART # | DESCRIPTION |
|---------|---|
| LTX-XXX | RAC X SwitchTips, Blue (Odd #); Maximum Working Pressure: 4050 psi (279 bar, 27.9 MPa) |
| WR-XXXX | RAC X Wide RAC™ SwitchTips, Blue (Odd #); Maximum Working Pressure: 4050 psi (279 bar, 27.9 MPa) |
| 246215 | RAC X HandTite Guard; 7/8 in (22 mm) thread size, standard Graco thread |
| 246437 | RAC X HandTite Guard; 11/16 in (17 mm) thread size, older style Graco pole guns, fits competitive guns with 11/16 in (17 mm) threads |
| 286-XXX | RAC 5 SwitchTips, Black (Odd #); Maximum Working Pressure: 4050 psi (279 bar, 27.9 MPa) |
| 243161 | RAC 5 HandTite Guard; 7/8 in (22 mm) thread size, standard Graco thread |
| 243263 | RAC 5 HandTite Guard; 11/16 in (17 mm) thread size, older style Graco pole guns, fits competitive guns with 11/16 in (17 mm) threads |



XHD TIPS AND GUARDS

| PART # | DESCRIPTION |
|---------|---|
| XHD-XXX | XHD SwitchTips, Gray (Odd #); Maximum Working Pressure: 7250 psi (500 bar, 50.0 MPa) |
| XHD001 | XHD RAC Guard; Maximum Working Pressure: 7250 psi (500 bar, 50.0 MPa) |
| XHD010 | Seal and Seal Kit (5-pack) |



BLUE MAX™ II AIRLESS HOSE

| PART # | DESCRIPTION |
|--------|---|
| 238358 | 3/16 in x 3 ft (4.8 mm x 0.9 m) 3300 psi (227 bar) Blue Max II Airless Whip Hose |
| 238959 | 3/16 in x 4.5 ft (4.8 mm x 1.4 m) 3300 psi (227 bar) Blue Max II Airless Whip Hose |
| 240793 | 1/4 in x 25 ft (6.4 mm x 7.5 m) 3300 psi (227 bar) Blue Max II Airless Hose |
| 240794 | 1/4 in x 50 ft (6.4 mm x 15 m) 3300 psi (227 bar) Blue Max II Airless Hose |
| 240797 | 3/8 in x 50 ft (9.5 mm x 15 m) 3300 psi (227 bar) Blue Max II Airless Hose |

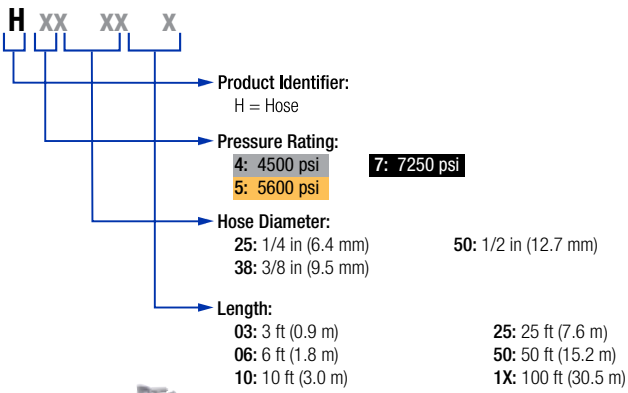
XTREME-DUTY HIGH PRESSURE WHIP HOSE

Maximum Working Pressure: 4000 psi (276 bar)

| PART # | DESCRIPTION |
|--------|--|
| 277249 | 1/4 in x 3 ft (6.4 mm x 0.9 m) MxF Whip Hose |
| 277250 | 1/4 in x 50 ft (6.4 mm x 15 m) FBE |
| 277351 | 3/8 in x 3 ft (9.5 mm x 0.9 m) MxF Whip Hose |
| 277251 | 3/8 in x 50 ft (9.5 mm x 15 m) FBE |
| 277253 | 1/2 in x 50 ft (13 mm x 15 m) FBE |

XTREME-DUTY HIGH PRESSURE WHIP HOSE

4500 psi 5600 psi 7250 psi



Example:
H53850 is a 5600 psi
3/8 in, 50 ft hose

CHOOSE THE RIGHT HOSE FOR THE JOB

| TECHNICAL SPECIFICATIONS | |
|--------------------------------|--|
| Working Pressure | 4500 psi (310 bar), 5600 psi (386 bar), or 7250 psi (500 bar) |
| Temperature Rating (all sizes) | -40° to 180°F (-40° to 82°C) |
| Chemical Resistance | Hose cover resistant to a wide variety of solvents, acids, and bases |
| Weather Resistance | Hose cover has outstanding resistance to oxygen, ozone, sunlight, and general weather conditions |
| Electrical Properties | Conductive hose |

3/4 IN XTREME-DUTY HIGH PRESSURE HOSE

| PART # | DESCRIPTION |
|--------|--|
| H77550 | 3/4 in x 50 ft (6.4 mm x 15 m) FBE Xtreme-Duty High Pressure Hose; Maximum Working Pressure: 7250 psi (500 bar) |



GH 833 KITS

| PART # | DESCRIPTION |
|--------|---|
| 287843 | Direct Immersion Kit; includes Hydraulic Feed Lines, Stinger Tube, and Lift Bracket |
| 249767 | OEM Kit; includes Hydraulic Engine/Head, Displacement Pump |
| 287916 | Non-Solvent Siphon Kit, 1.5 in diameter x 6.5 ft (2 m) Siphon Hose |
| 287915 | Solvent-resistant Siphon Kit, 1.5 in diameter x 6.5 ft (2 m) Siphon Hose |



HOPPERS AND FEED PUMPS

| PART # | DESCRIPTION |
|--------|---|
| 25D078 | 25 Gallon Material Hopper; Fits DutyMax GH 675DI, GH 733, GH 933, and GH 5040; includes Hopper, Lid, Coupling Hose, Elbow, Plugs, and Quick Disconnects |
| 16U505 | 12 Gallon Stainless Steel Material Hopper Kit; includes Hopper, Lid, Mounting Bracket, Fittings, Quick Disconnect; Fits GH 733, GH 933, and GH 5040 |
| 25A423 | 5:1 Monark Feed Pump Kit Fits GH 933 |



FLUIDS

| PART # | DESCRIPTION |
|--------|---|
| 243103 | Pump Armor – 1 qt (1 L) |
| 245133 | Pump Armor – 1 gal (3.8 L); Use Graco's exclusive Pump Armor™ for long-term pump storage to prohibit harmful rust and corrosion to your sprayer |
| 206994 | Throat Seal Liquid (TSL™) – 8 oz (.24 L) |
| 206995 | Throat Seal Liquid (TSL) – 1 qt (1 L) |
| 206996 | Throat Seal Liquid (TSL) – 1 gal (3.8 L); Prolong the life of your pump by routinely adding TSL to your pump's wet cup |
| 207428 | Hydraulic Fluid – 1 gal (3.8 l) |



HOSE FITTINGS

| PART # | DESCRIPTION |
|--------|---|
| 17J816 | 3/4 in npt x 3/4 in npt (19 mm x 19 mm) – MBE; Maximum Working Pressure: 7250 psi (500 bar, 50 MPa) |
| 156971 | 1/4 in npt x 1/4 in npt (6.4 mm x 6.4 mm) – MBE; Maximum Working Pressure: 7500 psi (517 bar, 51.7 MPa) |
| 156849 | 3/8 in npt x 3/8 in npt (9.5 mm x 9.5 mm) – MBE; Maximum Working Pressure: 7250 psi (500 bar, 50 MPa) |
| 158491 | 1/2 in npt x 1/2 in npt (13 mm x 13 mm) – MBE; Maximum Working Pressure: 7250 psi (500 bar, 50 MPa) |
| 157350 | 1/4 in npt x 3/8 in npt (6.4 mm x 9.5 mm) – MBE; Maximum Working Pressure: 6000 psi (420 bar, 29 MPa) |
| 159239 | 1/2 in npt x 3/8 in npt (13 mm x 9.5 mm) – MBE; Maximum Working Pressure: 7250 psi (500 bar, 50 MPa) |



GH 733, GH 933, GH 2570, GH 5040 KITS

| PART # | DESCRIPTION |
|--------|--|
| 287843 | Direct Immersion Kit; includes Hydraulic Feed Lines, Stinger Tube and Lift Bracket; Fits GH 733, GH 833, GH 933, and GH 5040 |
| 16U764 | Direct Immersion Kit; includes Hydraulic Feed Lines, Stinger Tube, and Lift Bracket; Fits GH 2570 |
| 287936 | Non-solvent Siphon Kit, 2 in diameter x 6.5 ft (2 m) Siphon Hose |
| 17B825 | GH 933 Hi Flo Big 250 Gun and Hose Kit with XHF™ Gun |



XTREME QUIKCHANGE LOWER KITS

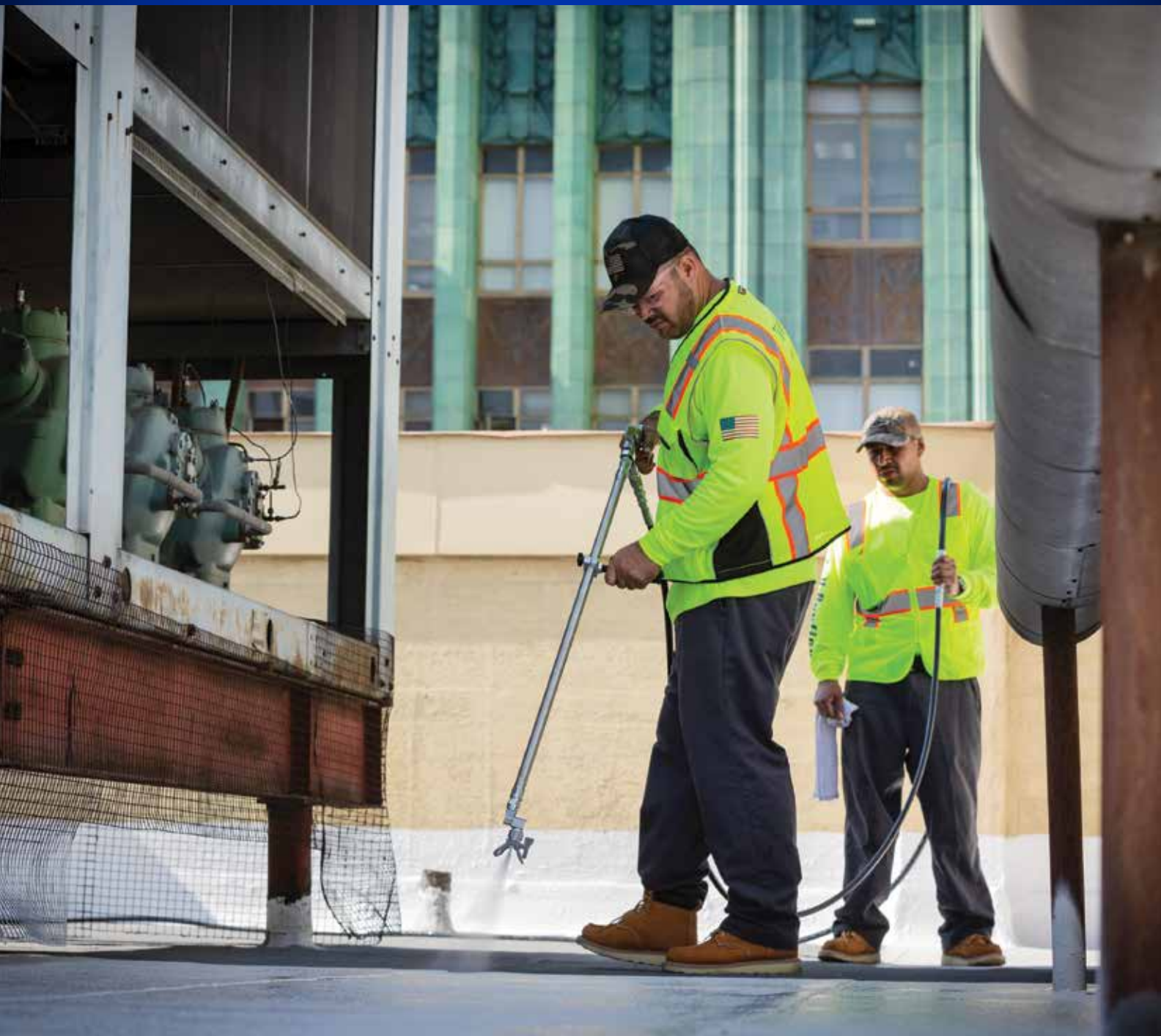
Includes pump lower and three (3) tie rods;
fits GH 733, GH 933, GH 1017, GH 2570, GH 5040

| PART # | DESCRIPTION |
|--------|--------------------------|
| 16U753 | GH 733 Pump Lower |
| 16U755 | GH 933 Pump Lower |
| 17B489 | GH 933 Hi Flo Pump Lower |
| 16U751 | GH 1017 Pump Lower |
| 16U752 | GH 2570 Pump Lower |
| 16U754 | GH 5040 Pump Lower |

CONVERT DUTYMAX GH 675DI TO 3300 PSI — PERFECT FOR YOUR ACRYLIC JOBS

DutyMax 3300 psi Lower Kit – 17V188

- 3300 psi 3 gpm DI Endurance Lower
- HD Blue Texture Gun
- Prime Valve
- 1/2" x 50" Blue Max Hose
- 3/8" x 11' Blue Max Whip Hose
- 30" Tip Extension
- 180 degree Tip Swivel
- RAC X 529 and 535 Tips and Guard
- All fittings



GRACO ELECTRIC SPRAYER SPECIFICATIONS



| | | GMAX II 7900 ROOF RIG | DUTYMAX GH 675DI | GH 733 | GH 833 |
|-----------------------|--|--|---|------------------------------|---|
| MODEL | Part Number | Complete–17E835 | Complete–25D223 Big 150–25D225 Big 150 with 25 Gallon Hopper –25D226 | Bare Electric Start–16U279 | Bare–249318 Complete–249617 Bare Electric Start–16U287 Complete Electric Start–16U288 OEM Kit–249767 |
| | | | | | |
| SPECIFICATIONS | Maximum gpm (lpm) | 2.2 (8.3) | 1.5 (5.7) | 4.0 (15.1) | 4.0 (15.1) |
| | Maximum psi (bar) | 3300 (227) | 6750 (465) | 4000 (276) | 4000 (276) |
| | Maximum Tip Size | .048 | .041 | .065 | .065 |
| | Engine | 200 cc Honda (6.5 HP) | 270 cc Honda (9.0 HP) | 390 cc Honda (13.0 HP) | 390 cc Honda (13.0 HP) |
| | Electric Start | No | No | Yes | Available |
| | Charging System (Electric Start only) | No | No | 18 Amp | 18 Amp |
| INCLUDES | Hose | 3/8 in x 50 ft (9.5 mm x 15 m) Blue Max II Airless | 1/2 in x 50 ft (12.7 mm x 15 m) Xtreme Duty | N/A | 3/8 in x 50 ft (9.5 mm x 15 m) Blue Max II Airless |
| | Whip Hose | 1/4 in x 3 ft (6.4 mm x .9 m) Blue Max II Airless | 3/8 in x 10 ft (9.5 mm x 3 m) Xtreme Duty | N/A | 1/4 in x 3 ft (6.4 mm x .9 m) Blue Max II Airless |
| | Gun | Heavy-Duty Blue | XTR-7 HF High Flow | N/A | Silver Plus |
| | Tip | RAC X 427, 635 | XHD 523, 527, 531 | N/A | RAC X 517, 655 |
| | Filter | Easy Out | No | No | Easy Out |
| | Pulsation Dampener | No | No | No | No |
| | Siphon Set | 5.0 gal Direct Immersion | 5.0 gal Direct Immersion | 1.25 in ID Nylon – 55 gal | 1.5 in ID PVC – 55 gal |
| | Other | 18 in Tip Extension | N/A | N/A | N/A |
| PUMP | Interchangeable Lowers | No | Yes | Yes | No |
| | Pump Type | Endurance Vortex Maxlife Extreme with ProConnect 2 | Endurance Piston Quick-Change | Xtreme Piston Quick-Change | Endurance MaxLife Piston Quick-Change |
| | Packing | V-Max™ Blue | V-Max Blue/Leather | XtremeSeal/Leather | V-Max Blue |
| | Piston Rod | MaxLife Extreme | Chromex™ | Chromex | MaxLife |
| | Cylinder | MaxLife | Hard Chrome | Hard Chrome | MaxLife |
| | Tie Rod | N/A | N/A | Silver-16U336 | N/A |



| GH 933 | GH 1017 | GH 2570 | GH 5040 |
|--|----------------------------|----------------------------|----------------------------------|
| Bare-16U281 Complete-16U282 Bare Electric Start-16U285 Complete Electric Start-16U286 | Bare Electric Start-16U277 | Bare Electric Start-16U278 | Bare Electric Start-16U280 |
| 2.5 (9.5) | 16.5 (62.5) | 7.0 (26.5) | 3.5 (13.2) |
| 7250 (500) | 1000 (70) | 2500 (172) | 5000 (345) |
| .053 | N/A | N/A | .067 |
| 390 cc Honda (13.0 HP) | 390 cc Honda (13.0 HP) | 390 cc Honda (13.0 HP) | 390 cc Honda (13.0 HP) |
| Available | Yes | Yes | Yes |
| 18 Amp | 18 Amp | 18 Amp | 18 Amp |
| 3/8 in x 50 ft (9.5 mm x 15 m) Xtreme-Duty Airless | N/A | N/A | N/A |
| 1/4 in x 6 ft (6.4 mm x 1.8 m) Xtreme-Duty Airless | N/A | N/A | N/A |
| XTR-7 Airless XTR704 | N/A | N/A | N/A |
| 519 XHD RAC | N/A | N/A | N/A |
| Yes | No | No | No |
| No | Yes | No | No |
| 1.0 in ID Nylon – 55 gal | 2.0 in ID PVC – 55 gal | 2.0 in ID PVC – 55 gal | 2.0 in ID PVC – 55 gal |
| N/A | N/A | N/A | N/A |
| Yes | Yes | Yes | Yes |
| Endurance Piston Quick-Change | Xtreme Piston Quick-Change | Xtreme Piston Quick-Change | Endurance Piston Quick-Change |
| XtremeSeal/Leather | XtremeSeal/Leather | PTFE/Leather | XtremeSeal/Leather |
| Chromex | Hard Chrome | Hard Chrome | Chromex |
| Hard Chrome | Hard Chrome | Hard Chrome | Hard Chrome |
| Silver-16U336 | Silver-16U336 | Gold-16U339 | Silver-16U336 |



graco.com/bigrigs



SPRAY WITH CONFIDENCE

Industry-Leading Warranty Protection

Every Graco Big Rig sprayer is backed by the industry's best warranty coverage.

3-YEAR HONDA ENGINE WARRANTY*

If the engine fails from normal use, Honda will replace it under warranty for the original owner for 3 years.

LIFETIME DRIVETRAIN WARRANTY*

If the drivetrain fails from normal use, we'll replace it under warranty for the original owner for the life of the sprayer.

30-DAY "JUST ADD PAINT" REPLACEMENT GUARANTEE*

Dissatisfied? Simply return the sprayer to the place you bought it within 30 days. They'll either exchange it for an identical sprayer or you can trade up to a larger sprayer at an additional cost.

3-YEAR WARRANTY*

Coverage against defects in materials and workmanship on the entire sprayer.

DOWNTIME ELIMINATOR PROGRAM*

Part needed for a warranty repair not in stock at your distributor? Get FREE next business day air freight delivery when distributor orders the part by 2 p.m. CT.

CONVENIENT SERVICE

Graco offers more than 5,500 authorized distributor locations in North America and over 700 locations to administer warranty repair.

*NORTH AMERICA ONLY. See your local Graco Distributors for country specifics.
*See printed product warranty for complete warranty terms and conditions.



Finish Every Job, Every Time

Downtime is costly. With the Endurance Advantage Program, you'll never need to worry about it again:

Receive up to 70% OFF the list price of an Endurance Pump.

Follow the registration instructions included with your sprayer.



Every Graco purchase comes with A+ Customer Service.

Questions?
Call (844) 241-9499

For more information visit graco.com

©2019 Graco Inc. 344409 Rev. A 2/19 All written and visual data contained in this document are based on the latest product information available at the time of publication. Graco reserves the right to make changes at any time without notice. Trademarks are referenced herein for identification purposes only. All trademarks are the property of their respective owners. Product covered by issued and pending patents, see graco.com/us/en/patents