



# GFS MANOMETER

GFS Part Number: 242-001

## Installation & Operating Instructions

Each GFS Manometer includes:

- Two tubing connectors for 1/8-inch pipe or sheet metal ducts
- Two mounting screws
- 1-ounce bottle of red indicating fluid
- Red and green pointer flags
- 8 feet of double-column tubing
- Instructions

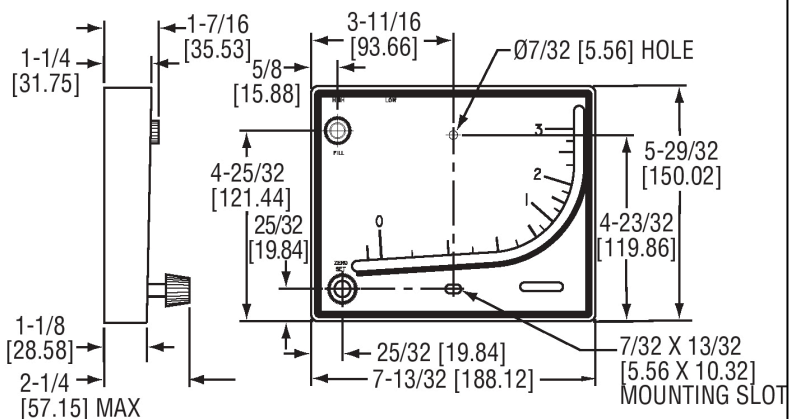
**NOTE:** Contact Global Finishing Solutions at 800-848-8738 to speak to a Technical Services Representative:

- To make sure the correct fluid is being used.
- If additional fluid (GFS part number 242-166) is required.



## MOUNT THE MANOMETER

1. Position the manometer on the outside of the booth.  
**Note:** Choose a convenient location, approximately 5 feet from the floor.
2. Drill two holes (1/8-inch or 9/64-inch) on a vertical line 3-15/16 inches apart for the provided fittings.
3. Loosely mount manometer with the provided self-tapping screws.
4. Adjust the gauge until the bubble is centered in the level vial, then secure the manometer tightly.



### SPECIFICATIONS

Accuracy:  $\pm 3\%$  FS.

Temperature Limits: 140°F (60°C).

Pressure Limits: 10 psi (70 kPa).

Weight: 1.04 lb (472 g).

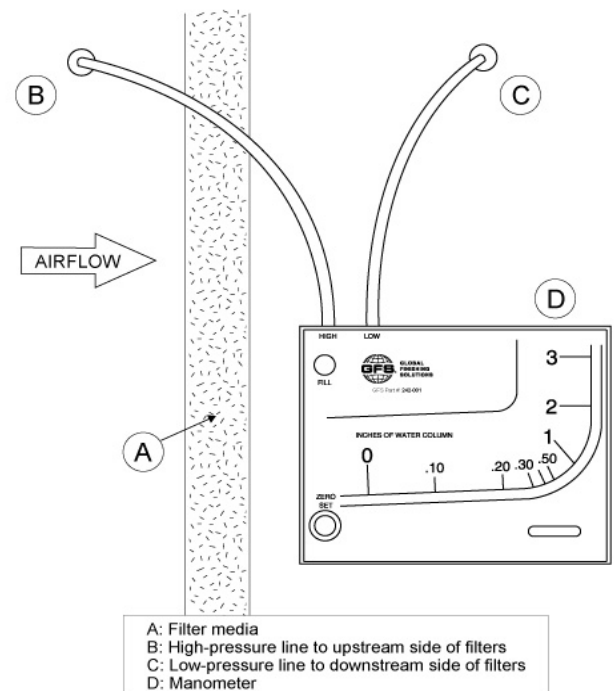
## FILL THE MANOMETER

1. Turn the white adjustment knob counterclockwise until it stops, then turn clockwise three full turns. This puts zero in approximately the middle of the travel adjustment in either direction.
2. Remove the fill plug and carefully pour the red indicating fluid until it reaches zero on the scale.  
**Note:** Minor adjustments can be made by turning the white adjustment knob.
3. Replace the fill plug.  
**Note:** If the gauge is overfilled, remove the excess by inserting a pipe cleaner through the fill port to blot up excess fluid.

## INSTALL THE AIR FILTER GAUGE

1. Mount the gauge within 3 feet of the filter bank.
2. Install tubing adapters on each side of the filter.
3. Run tubing:
  - a. Run the high-pressure line (left fitting) to the booth.
  - b. Run the low-pressure line (right fitting) to the downstream side of the filters.
4. With the booth off, adjust the manometer to read zero.
5. Place the supplied red pointer flag at the appropriate location referenced below (indicating dirty filters):
  - **GFS Wave®:** ½-inch w.c.
  - **GFS Poly™:** ½-inch w.c.

**Note:** For other types of filters, the differential setting should be adjusted to the manufacturer's recommendations.
6. Turn on the booth with clean filters and observe the rise in the manometer reading. Mark the location of the indicator fluid with the supplied green pointer flag (indicating clean filters).



## MAINTENANCE

1. With the booth operating, check the manometer to determine if the filters need to be replaced.
2. Check fluid level regularly and adjust as needed.
3. Make sure the manometer reads zero when the booth is off. If not, zero the manometer with the white adjustment knob.  
**Note:** Make sure the tubing is disconnected and the gauge is open to the atmosphere before adjusting zero.
4. Clean with mild soap and water. Avoid any cleaning fluids that may result in damage to the gauge.

**NOTE:** The instructions provided are for single-stage filtration with GFS Wave exhaust filters. Contact Global Finishing Solutions at 800-848-8738 and speak to a Technical Services Representative for:

- Setpoints and procedures for booths with multiple stages of filtration.
- Exhaust fan adjustments for filtration other than the originally supplied GFS Wave filters.